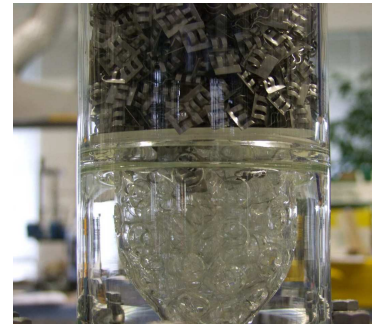
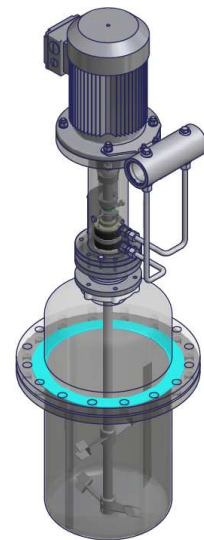


2 x 20 l mixing vessel cascade with 2-stage absorption



Isometrie (1:5)



Characteristics:

- 2 x 20 l stainless steel mixing vessel with glass cover in cascade connection
 - with heater jacket and insulation
 - ground inner surface
 - low-dead-space bottom outlet
 - compact, space-saving design
- low-dead-space, pneumatic membrane bottom outlet valve, suitable for suspensions, PTFE product-contact parts, cycled fill-level regulation
- stainless steel condensers for partial condensation in special, complete liquid-return configuration
- NW 150 scrubber of 3.3 borosilicate glass with stainless steel packing with special distributor and packing support for very good liquid distribution and high hydraulic loads
- NW 100 scrubber of 3.3 borosilicate glass with 15 PTFE/stainless steel bubble caps, suitable for small liquid loads and scale-up
- NW 200 settler, 3.3 borosilicate glass / PTFE
- 3.3 borosilicate glass / PTFE sampling system
- tubing and measuring technology
- ATEX-compliant agitator with
 - 2-stage stainless steel stirrer system
 - double-action mechanical seal with thermosiphon
 - manually adjustable rotation speed from 0-700 rpm
- directives
 - CE machinery directive
 - pressure equipment directive 97/23 EC
 - ATEX, EX Zone 2/2, temperature class T3, explosion group IIB