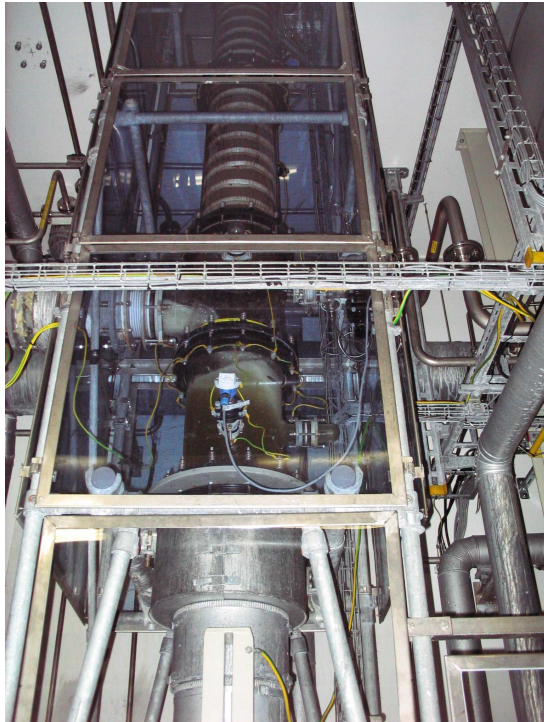


## Corrosion resistant column DN 600



### Characteristics:

- Continuous rectification column, DN 600, consisting of
  - PTFE-coated sump vessel, DN 600
  - Steam-heated graphite circulation reboiler
  - Borosilicate glass column, internal diameter 600
  - PVDF packed beds
  - PTFE / tantalum packing retainer
  - Support grid for high hydraulic loads
  - Borosilicate glass 3.3 / PTFE redistributor
  - Stainless steel head condenser
  - Stainless steel external reflux separator system
  - Hastelloy B feed distributor bubble tray, internal diameter 600, providing systematic gas exposure for the incoming feed flow
- Lateral expansion options for individual column sections to minimise maintenance time for corrosion damage (see photo)
- Corrosion resistant instrumentation, and control and automation process flow diagram and description
- Stainless steel tube frame, fixtures and flanged ring connections, conductive Makrolon coating as splash and contact protection
- Regulations
  - Directive on Machinery/CE conformity
  - Pressure Equipment Directive 97/23 EC
  - ATEX, IIB, EX T3
  - TA Luft certificates